



# Graduates & Careers at VINCI Building



Operating from a network of offices throughout England and Wales, VINCI Building delivers new build, refurbishment and associated fit-

out works, with particular expertise in the education, healthcare, industrial, air, retail, commercial and mixed-use sectors.

*Humility*

*Team spirit*

*Excellence*

*Entrepreneurship*

*Integrity*

## Placement and Sponsorship

We offer a wide range of opportunities to gain experience that you need to enhance your knowledge and studies and we pride ourselves in fostering a family-feel, where team members are always there to support and guide you.

We are passionate about **building relationships** with students during the formative years of your career for a working relationship that grows and strengthens throughout your degree.



### Summer Placement and Year Placements Roles - Disciplines

- ▶ Commercial / Quantity Surveyor
- ▶ Civil Engineering
- ▶ Finance
- ▶ Business Administration – Quality/Innovation, Health & Safety, HR, Supply Chain
- ▶ Communication

### What do we offer?

- ▶ Mentor guidance
- ▶ Placement induction
- ▶ Dedicated Early Careers Team to support your placement experience
- ▶ Your placement is matched by your preferences and our business needs, creating opportunities to gain practical skills aligned with your degree.
- ▶ Opportunity for sponsorship at the end of placement based performance. Sponsorship includes - Bursary Payment with graduate offer at the end of degree. Involvement in Early Careers Network

### Requirements

- ▶ Target grade 2.1
- ▶ A full UK driving licence
- ▶ We regret that we cannot offer visa sponsorship for this position, therefore the legal right to work in the UK is essential





# Graduate Development Programme

Embark on a rewarding career journey where your potential is nurtured, your contributions are valued, and your future is driven by you. You'll have access to industry experts and cutting-edge resources to help you grow professionally.

We foster a culture of collaboration, inclusivity and continuous improvement. You'll be part of a supportive community that values your contributions and encourages your development.

You'll be involved in projects that prioritise green practices and contribute to a more sustainable future and you'll have the opportunity to work with cutting-edge tools and methodologies.

.....

## Graduate Programme Structure

- ▶ 3 year Rotation Scheme between sites, central team, exposure to other Business Units and Delegations
- ▶ Mentor allocation for ongoing guidance and support
- ▶ Professional Membership accreditation support
- ▶ Graduate Training Programme – structured series of trainings courses to support your personal development, technical skills and professional membership achievement
- ▶ Early Careers Network

.....

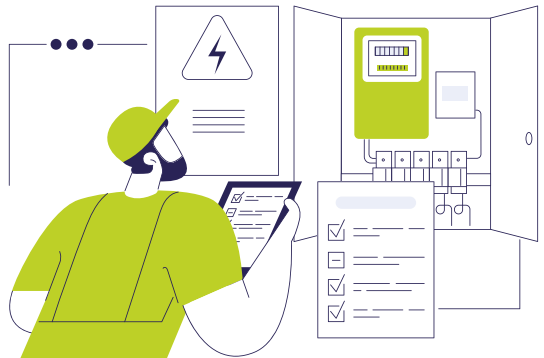
## Graduate Roles – Disciplines

- ▶ Commercial / Quantity Surveyor
- ▶ Environmental – GIS and Materials Specialist
- ▶ Engineering – Civil, Mechanical, Digital
- ▶ Finance
- ▶ Business Administration – Rotation into Quality/Innovation, Health & Safety, HR, Supply Chain
- ▶ Communications

.....

## Requirements

- ▶ Target grade 2.1
- ▶ A full UK driving licence
- ▶ Prepared to be flexible on location
- ▶ We regret that we cannot offer visa sponsorship for this position, therefore the legal right to work in the UK is essential



**Register your  
interest and  
application**

Scan below to see what our graduates and placements students **have to say**.

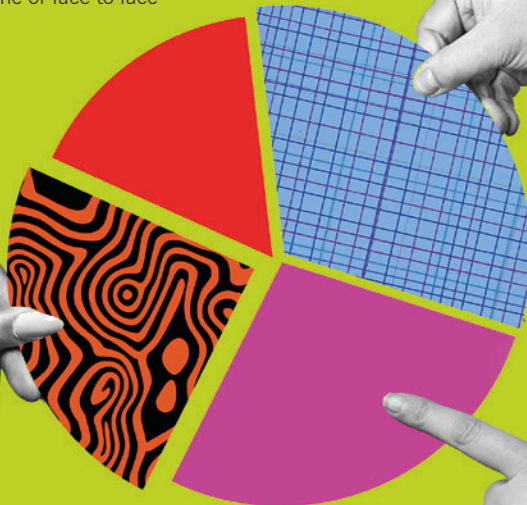
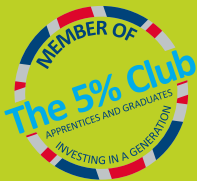


.....  
**Register your interest**

1. Scan the QR code to register your interest

.....  
**Apply for a role**

- 2. You can **check** current vacancies on our website
- 3. **Interviews** on the phone or face to face



 [vinci-building-uk](https://www.linkedin.com/company/vinci-building-uk)

 [@VCUK\\_Building](https://twitter.com/VCUK_Building)

**EARLY CAREERS**  
*Create Your Next Move*



[www.vinci-building.co.uk](https://www.vinci-building.co.uk)



Graduates & Careers at VINCI Building